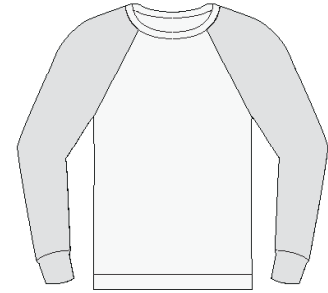
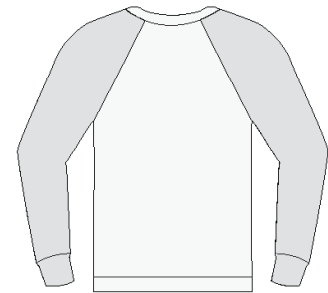


Ladies Perfect Weight 3/4 Sleeve Raglan



Front



Back

DT226

Designer Notes: Sweetly feminine, the 3/4 Sleeve Raglan Tee is the girlish, trim companion to our guys's raglan.

Fabric/Style: 4.3-ounce, 100% ring spun combed cotton, contrast rib knit crewneck, contrast flatlock stitching throughout, raglan sleeves.

Care Instructions:

Finished Measurements in Inches

Size	S	M	L	XL	XXL	1X	2X
Length	25.5	26.5	27.5	28.5	29.5	30.5	31.5
Chest	16.5	17.5	18.5	19.5	20.5	21.5	22.5
Sleeve	20.5	21	21.5	22	22.5	23	23.5
Areas for Decoration	Left Chest / Right Chest / Full Back			Port Pocket™		NA	

Colors

	White/Heathered Army
	White/Heathered Dark Navy
	White/Heathered Deep Red
	White/Heathered Mocha Brown
	White/Heathered Nickel

Please Note:

Colors shown are approximate and for reference only. For closest match see PMS colors, or for exact match, returnable samples and grommets are available.

Collar measured center back seam to top hem, Chest width 1" below arm hole, Side pocket from top to bottom of opening, Body length from back neck seam to hem, Sleeve length from center back seam to hem

Color Chart

Colors	Heathred Army	Heathered Dark Navy	Heathered Deep Red	Heathered Mocha Brown	Heathered Nickel
Textile PMS	No Match	No Match	No Match	No Match	No Match
General PMS	No Match	No Match	No Match	No Match	No Match